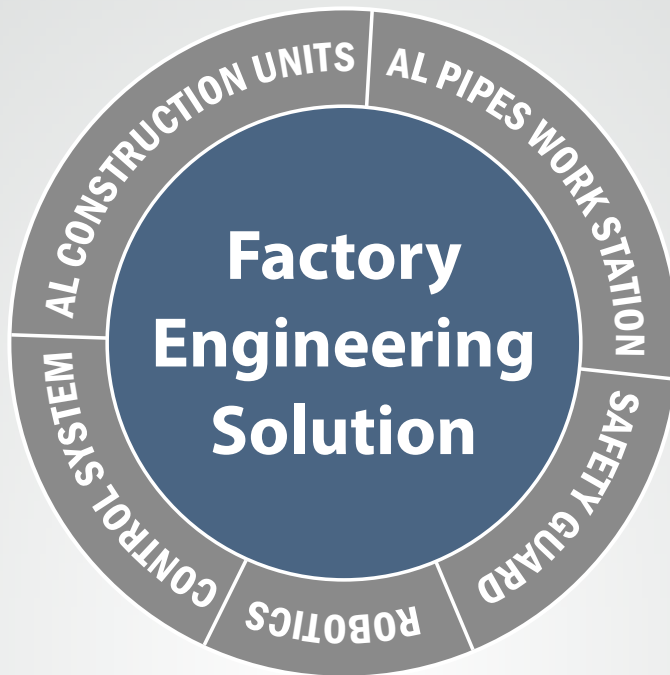


SUS

Standard Units Supply



STANDARD UNITS SUPPLY INDIA PRIVATE LIMITED

About Standard Units Supply (India) SUSI

SUSI is a subsidiary of SUS Singapore which belongs to the SUS group founded in Japan, Shimizu City Shizuoka Prefecture in Jun 1992. Since then we are committed to bring automation engineering solution through emphasis on know-how, service and support to factories and original equipment makers in their pursue to quality, reliability, consistency and productivity in their manufacturing facilities and machines.

With our early awareness in sustainability and environmental friendly manufacturing challenges, we strive to provide engineering solutions that are flexible, environmental friendly and cost effective.

SUSI established in Chennai, India in June 2014 and has plan for future branch offices in Pune and Delhi region to better service and support our clients in India.

As a newly established company, we are focused on providing engineering solutions to factories in India in 2 areas :

1. Aluminium framed units used in machine base and safety cover and aluminium pipe structure used as work-station in production line for assembly work, material handling and storage etc.
2. Leading linear robotic system by IAI that SUS had marketed more than 2 decades tapping on our vast products and application knowledge would contribute significantly in providing automation solution to our clients.

Management principles

Business attitude

Harmony created between customers and us
We shall offer products and services to our customers in mutual trust, and share with them limitless pleasure and satisfaction.

Corporate culture

Nourishing corporate culture filled with energy and communication
While recognizing that our employees are assets to the company, we shall make efforts to fill our workplace with energy and communication, and shall regard the company as a place in which people can grow and find a sense of accomplishment.

Contribution to the society

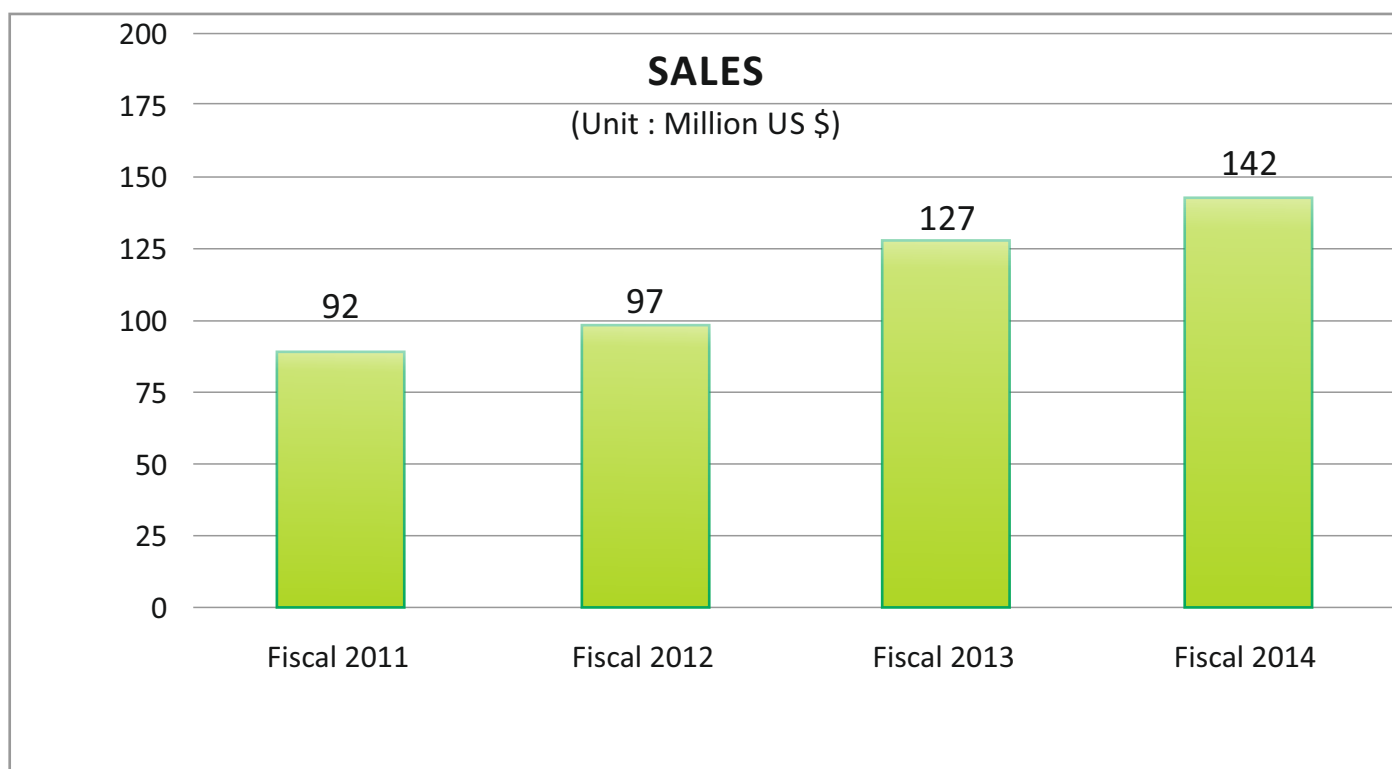
Successful results shall be actively returned to the society
We shall put our efforts into creating an affluent society, through our business activities, as a truly meaningful organization for our local community, customers and shareholders.

Development principles

Unique but standardization-oriented ideas
We shall offer products of high quality at reasonable prices, manufactured through unique but standardization oriented ideas.

Resource conservation

Philosophy to use limited resources repeatedly and effectively
We shall make efforts to use limited earthen resources effectively, and manufacture products considering environmental conservation, harmony with nature, and the recycling of resources.



SUS Corporation

Established in 1992

SUS Holdings., Ltd.

Established in 2007

Standard Units Supply (Thailand) Co., Ltd.

Established in 2001, as a sales company of FA accessories.

SYSTEM Upgrade SolutionBKK Co., Ltd.

Established in 2001, as a sales company of FA equipment in Thailand.

SUS (Singapore) Pte. Ltd.

Established in 1997, as a sales company of FA unit equipment in Singapore

SUS (Suzhou) Co., Ltd.

Established in 2004, to provide support for Singaporean customers' business in China.

Standard Units Supply (Vietnam) Co., Ltd.

Established in 2011

Standard Units Supply (India) Pvt. Ltd.

Established in 2014

HISTORY OF SUS PRODUCT DEVELOPMENT

1992

- System products (palletizers, autoloaders, unloaders, etc.)



(top) SF (Standard Frame)
(bottom) SA (Servo Actuator)

1995



1996

- SW (Standard Working System)



2000

- IP (Intelligent Parts Feeder)
- 3-axis rotary robot



2001

- SC (Standard Control Box)
- GF (Green Frame)



2002

- XA (Exactly Actuator)
- Aluminium furniture and accessories



2003

- IP (Intelligent Parts Feeder)
- Grid Shelf, S-table, S-chair



2005

- tsubomi



2006

- PF (Partition Frame)
- BF (Box Frame)
- SS (Sensing System)
- allen system



2007

- AZ (Safety Fence)
- XA-DT (Desk Top Series)
- GF karakuri
- LED illumination



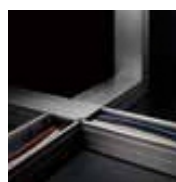
2008

- XF (Xiphoid Frame)
- SF2
- Aluminium smoking booth
- Station waiting room
- Aluminium louvers



2010

- Aluminium wiring ducts
- Clean booth units



2011

- CBOX skeleton type
- Plant factory cultivation shelving
- Aluminium tent house



2012

- SBOX D type
- Cable holders and rings



Sample Products



Work Table



Work Station



Partition



Partition



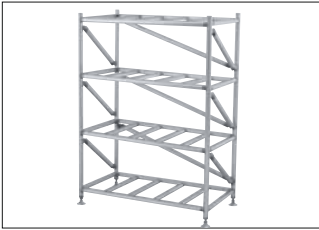
Trolley



Trolley



Trolley



Rack



Shooter 1 Line 1 Tier



Shooter 1 Line 2 Tiers
(Asymmetric)



Shooter 2 Line 3 Tiers



Shooter 3 Line 3 Tiers



Karakuri Products



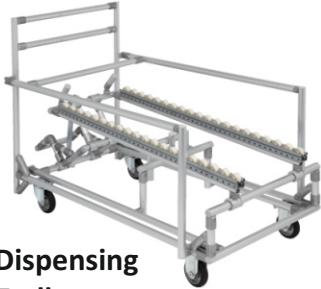
Shuttle Shooter



Elevator



Multi Level Shooter



Dispensing Trolley



Level Lifter



Automatic Shooter
Automatic Trolley



Horizontal Turn/90° Turn

Automated Profile Cutting Machine

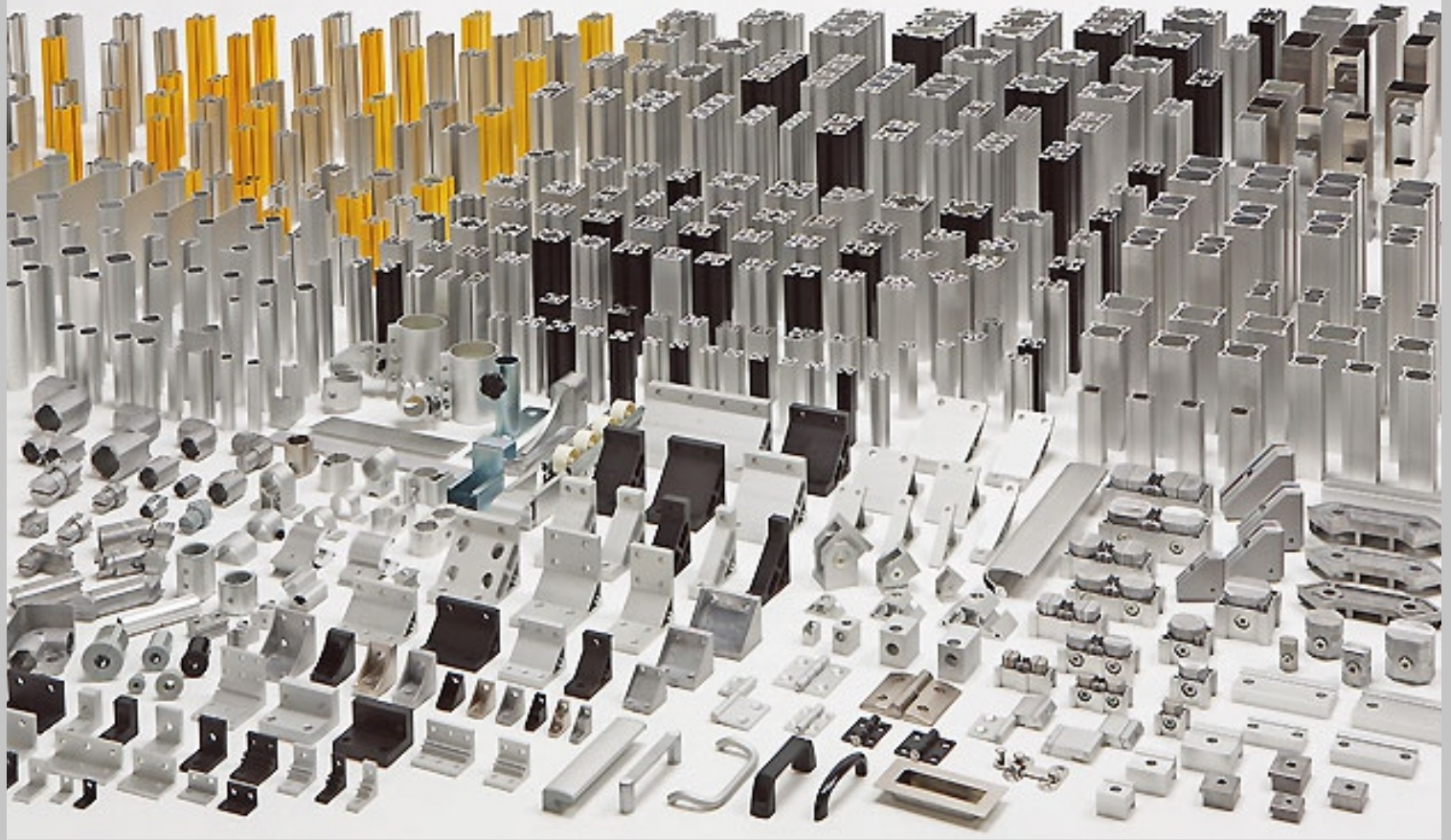


Benefits of automated Profile cutting machine

- ❖ Flat perpendicular cut finishing with proper clamping and safety to operators.
- ❖ Frame length accuracy of $\pm 0.25\text{mm}$ and repeatability of $\pm 0.06\text{mm}$ utilising servo back gauge.
- ❖ Nominal frame length cutting range from 20mm to 4000mm.
- ❖ Excellent angular cut from integrated cutting blade to angular base adjustment with locating pin.
- ❖ Adjustable cut feeding speed optimize according to frame type to assure excellent cut finishing.

SUS

Building A Sustainable Future



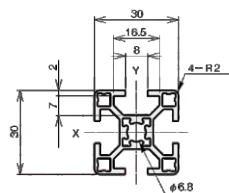
<http://global.sus.co.jp>



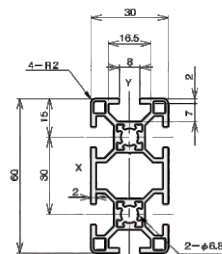
30 SERIES



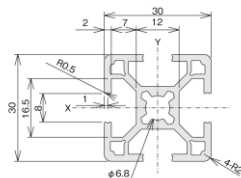
SF-K.30.30



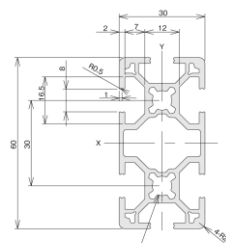
SF-K.30.60



SF2-30.30



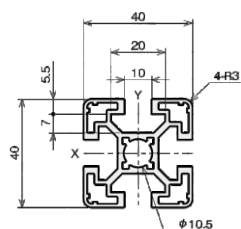
SF2-30.60



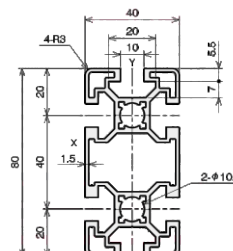
40 SERIES



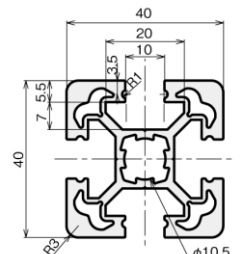
SF-K.40.40



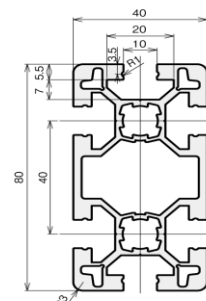
SF-K.40.80



SF2-40.40



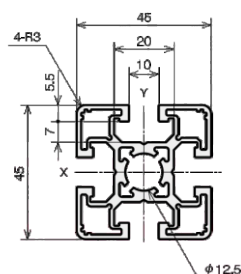
SF2-40.80



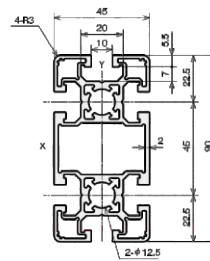
45 SERIES



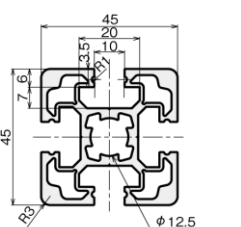
SF-K.45.45



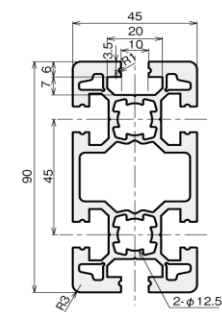
SF-K.45.90



SF2-45.45



SF2-45.90



Types of Frames



Nut



T Nut L

Easy Nut

After Nut
After Nut Support

Lock Nut

Free Nut

S Double Joint



QC Joint L

TG Joint Kit
Wrench Hole Cap

S Double Joint Kit

S Blind Bracket L

Free Nut with Headless Bolt
Free Stud Free Nut Stopper

Variety of Brackets



D Bracket Electroless nickel



D Bracket Spacer



D Bracket Spacer Electroless nickel



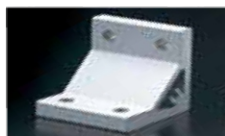
Hard Bracket L



Hard Bracket LG



Hard Bracket LW



Hard Bracket L4080



Hard Bracket G80



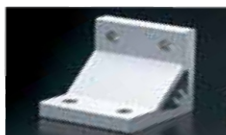
Hard Bracket G80160



Hard Bracket LW 4080



Hard Bracket GW 80



Hard Bracket L4590



Hard Bracket G90



Hard Bracket G90180



Hard Bracket LW4590



Hard Bracket GW90



Angle Bracket L40



Angle Bracket Hard L40



Angle Bracket L4080



Angle Bracket L45



Turn Bracket 40/45A-B



Angle Bracket L4590



L Bracket L



Hard Bracket L-DE135/45



Hard Bracket L4080-DE135/45



Hard Bracket L4590-DE135/45



Truss Joint L40/45 Truss Cap L

Accessories



Adjuster Kit



Caster Plate L



Foot Base



Anchor Bracket



Anchor Plate
Anchor Plate Bracket



Frame Cap



Cover Holder L
Cover Support L6



Slider L



Frame Cap
Lock Type 4040/4545



D Bracket Cap
Hard bracket Cap



Slot Cap



Slot Seal



Cable Clamp



Slot Hook



Adjuster • Foot • Caster
Caster Plate as Single Item



Fixed Hinge



Slip-Joint Hinge
Electroless Nickel / Acrylic Paint



Free Hinge
Free Size Free Hinge



Door Lock



Pull



Magnet Catch
N/J



Magnet Catch G



Magnet Catch
with Limit Switch



Magnet Catch G
with Limit Switch



Safty Instrument



Clean Fan Unit



Ball Catch



Panel Fix
Panel Fix Rubber



Panel Clamp



Seal Cover



Panel Frame



Sliding Door Rail (Resin)



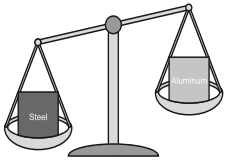
Sliding Door rail
2 Rows-3Rows (Aluminum)

Green Frame

Lightweight

Aluminum has about 1/3 of the mass to steel

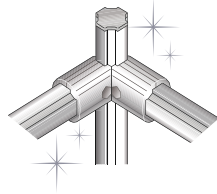
Pursue the lightweight by using the section form which removed unuse material include density. All kind of parts or connector also made from aluminum to contribute the overall lightweight after built. As the rack and shooter is movable, it can reduce the load to the worker which increase efficiency.



No Rust

High Corrosion Resistance

Alumite treatment (more than 9 μm) was applied on the frame surface to enhance the corrosion resistance and weather resistance. Well as in the factory, it's possible to use as a plant cultivation shelf or handrail and outdoor purpose. No matter where, No matter how. Also it is hard to get rust, scratch, or dust which provides the hygiene and aesthetic to your environment.



Environmental Friendly

Environmental conservation and resource effectiveness

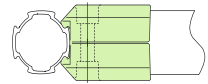
Recently Aluminum has drawn attention as an environment friendly material with a very high percentage of recycle compared to other metal. The amount of electricity uses during refining the recycle ingot is only 3% compares to new ingot. As frame, connector also made from aluminum, this product is considered to be friendly to earth and environment because of effectiveness to its resource.



High Reusability

Easy bolt fastening for assemble and dissemble

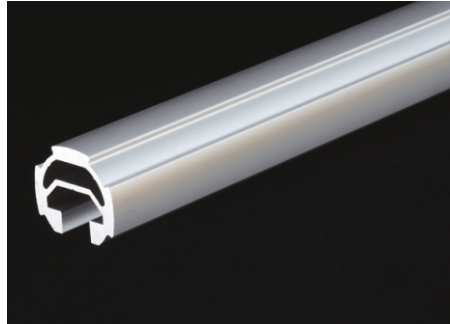
GF is not only easy to assemble using only 1 bolt and wrench, but it is also simple to disassemble. The combination of extraordinary connector and frame answer to the demand of workspace, and freely to rearrange or expand. The component can be reused. This will help minimize the scrap part.



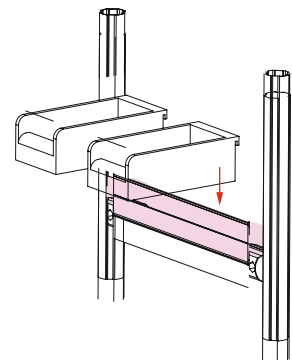
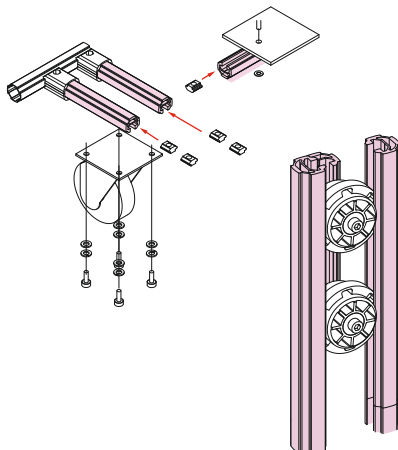
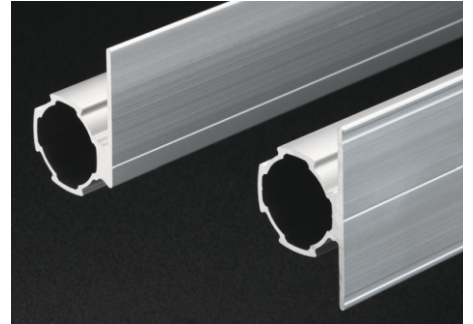
Green Frame GFF-000



Green Frame L Slot



Green Frame F 35/F50



Connector



Foot Component



Panel Board



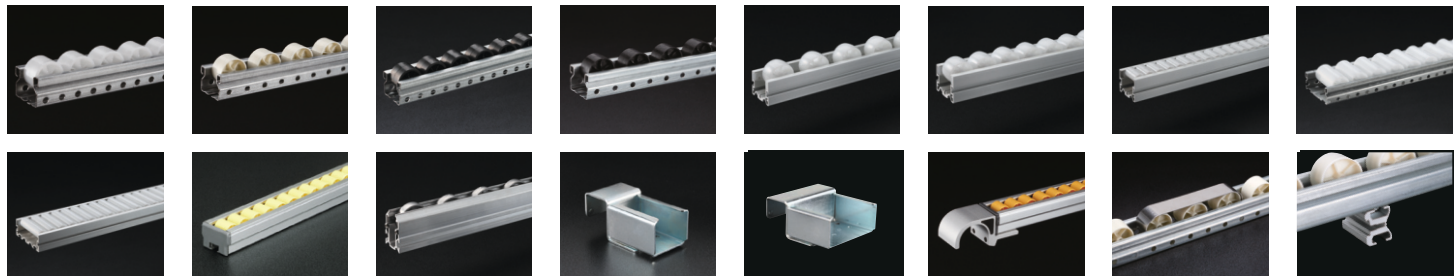
Door Part



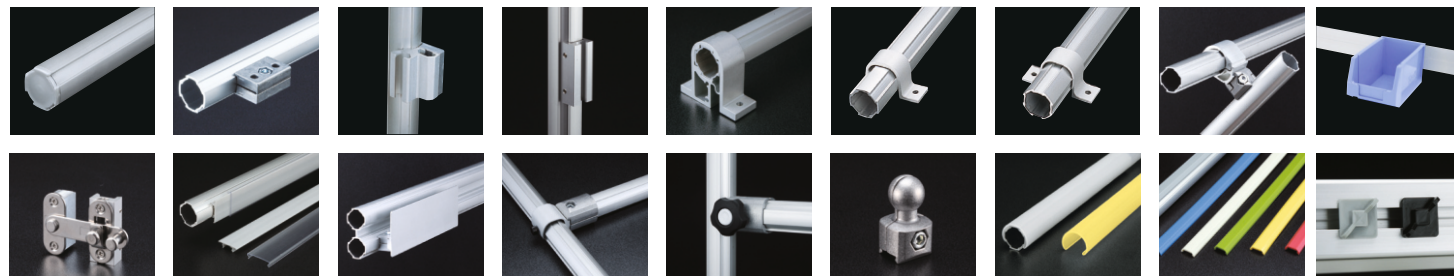
Moving Part



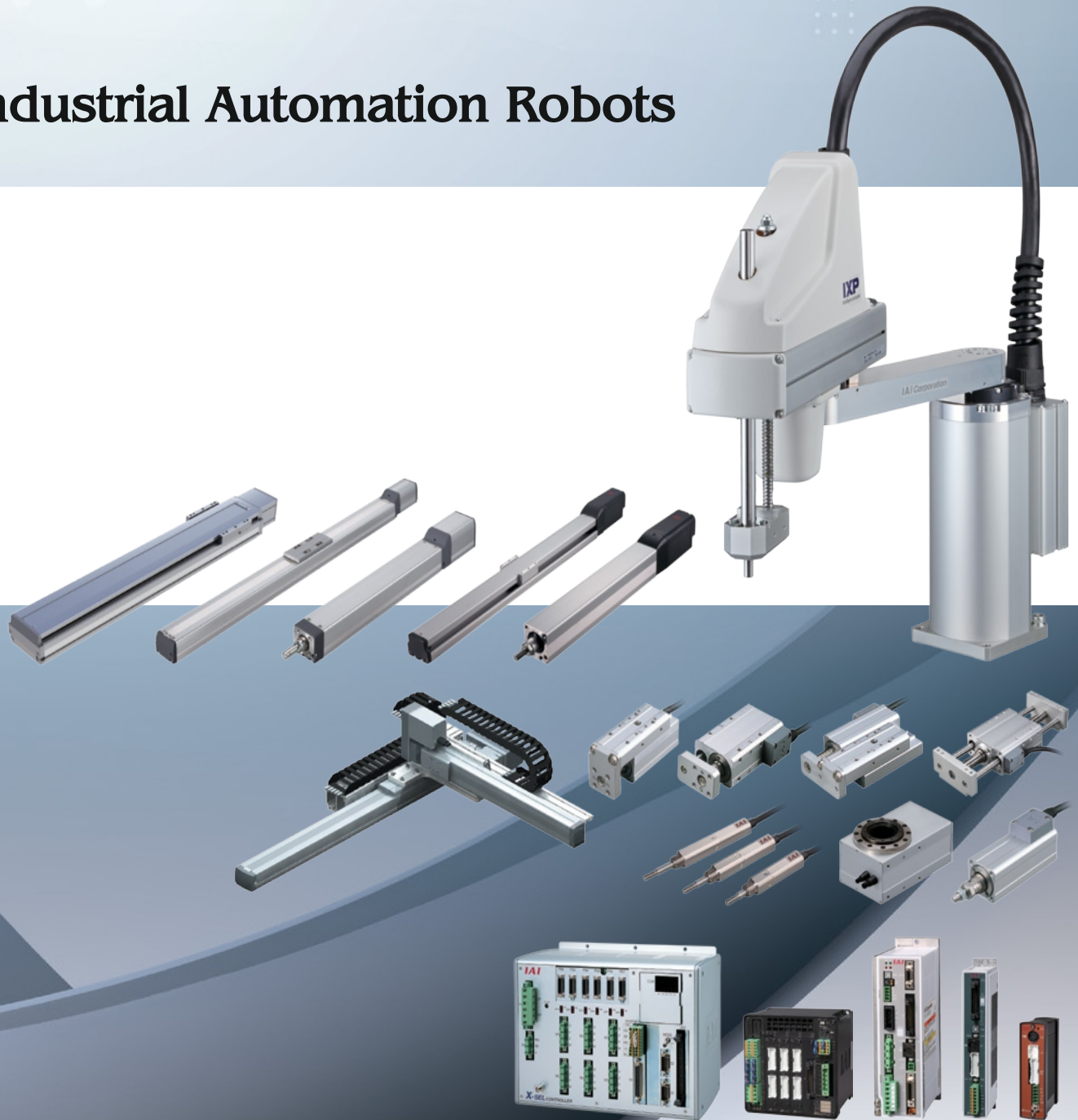
Corocon



Accessories

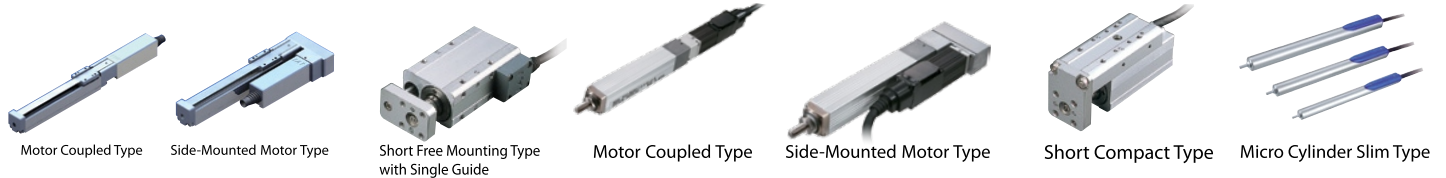


Industrial Automation Robots



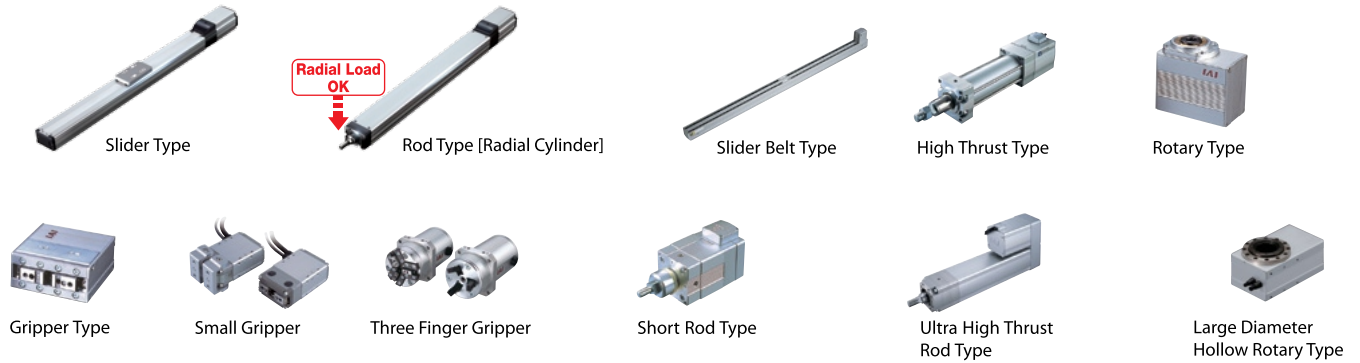
Mini ROBO Cylinder

Next-generation electric actuators, the solution for space constrained applications



ROBO Cylinder®

The affordable high-precision electric actuators reduce your running costs to 1/5 of a pneumatic system



Single Axis Robot

Intelligent actuators with high-speed, high-transfer capabilities



Cleanroom Type

Dedicated cleanroom types conforming to cleanliness class 10



Splash-Proof/Dust-Proof Type

Protection conforming to IP54-IP67, these actuators are the solution when the environment is less than desirable



Cartesian Robots

Pre-configured cartesian robots that reduce installation and setup times



TTA Table Top Type Robot

Improved table top robots for cell productions and R&D applications

Gate Type



2-axis Specification



3-axis Specification



4-axis Specification



2-axis Specification



3-axis Specification

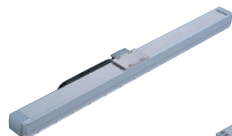


4-axis Specification

LSA Series Linear Servo Actuator

A full lineup of linear servo actuators to meet your needs

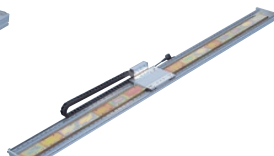
Maximum load capacities of up to 120kg and maximum strokes of up to 4m



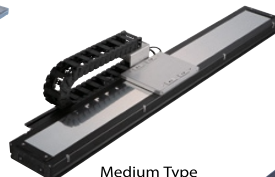
Shaft Type
LSA-S



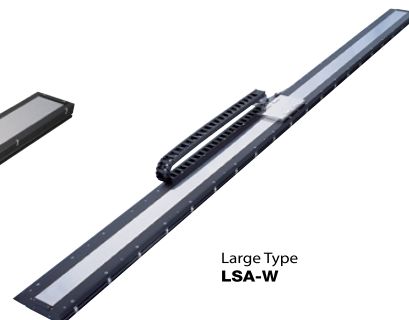
Compact Type
LSA-H



Flat Type
LSA-L



Medium Type
LSA-N



Large Type
LSA-W

SCARA Robots IX & IXP Series

The IX SCARA robots feature high performance and functionality



Standard Compact
Type



Standard Medium
Type



Standard Large
Type



High-Speed
Type



IXP



IXP with Gripper

Controller

Wide variety of operation patterns for your specific needs

POSITION CONTROLLER

PMEC AMEC PSEP ASEP DSEP PCON-CA

(Power CON)



NEW

ACON-CA



NEW

DCON-CA



SCON-CA



PROGRAM CONTROLLER

PSEL



For RCP2/RCP3
(1-2 axes)

ASEL



For RCA/RCA2/RCL
(1-2 axes)

SSEL



1-2 axes

X-SEL



1-8 axes

For RCS2/RCS3-
Cartesian-Linear Servo

NEW

MSEL



For PowerCon
SCARA

Teaching Pendant

Programming points have never been easier (ANSI type offering enhanced safety is available)



Power Supply Built-in Teaching Pendant for ERC3
RCM-PST (Quick Teach)

NEW



Touch Panel Teaching Pendant for Position Controllers
and Program Controllers.
TB-01

SUS GLOBAL NETWORK



SUS Corporation

S-Patio, 6F, 14-25, Minami-cho, Suruga-ku, Shizuoka-shi, Shizuoka 422-8067, Japan

Tel : +81-54-202-2000, Fax : +81-54-202-2002

www.global.sus.co.jp

SUS (Singapore) Pte. Ltd.

19 Tannery Road 347730, Singapore

Tel : +65-6842-4348, Fax : +65-6842-3646, Mail : sales@sus.com.sg

Standard Units Supply (India) Pvt. Ltd

43/1 Padasalai Street, Ayanambakkam, Chennai - 600095, Tamil Nadu, India

Tel : +91-044-49524482, Fax : +91-044-49524482, Mail : sales@sus-india.com

SUS (Suzhou) Co., Ltd.

Block 25A# Industrial Workshop, Chuangtuo industrial area, Suzhou Industrial Park, Suzhou 215122, China

Tel : +86-512-82253336, Fax : +86-512-82253339

System Upgrade Solution BKK Co., Ltd.

Amata Nakorn Industrial Estate 700/71 Moo 5, T. Klongtamru A. Muang, Chonburi 20000, Thailand

Tel : +66-38-457069, Fax : +66-38-457072

www.susbkk.co.th

Standard Units Supply (Vietnam) Co., Ltd.

Plot N1, Thang Long Industrial Park, Dong Anh District, Hanoi, Vietnam

Tel : +84-4-3-959-0156 8, Fax : +84-4-3-959-0159

Standard Units Supply Philippines Corporation

Building U-2 Lot 22B Phase 1B First Philippine Industrial Park Special Economic Zone Tanuan City 4232,
Batangas Province Philippines

Tel : +63-43-430-1074, 1076, Fax : +63-43-430-1071

SUS America, Inc.

901 Cambridge Drive, Elk Grove Village, IL 60007, USA

Tel : +1-847-350-1525, Fax : +1-847-350-1531